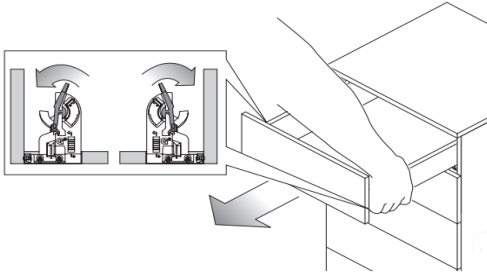
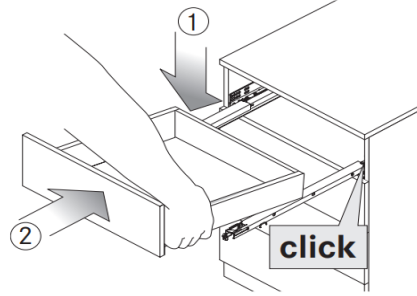


**Montage lade/Montage du tiroir**



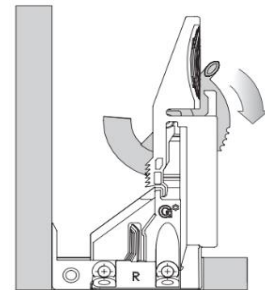
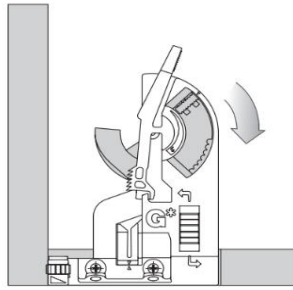
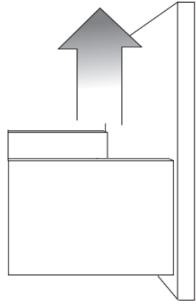
**Demontage lade/Demontage**



**Dynapro 3D/4D**

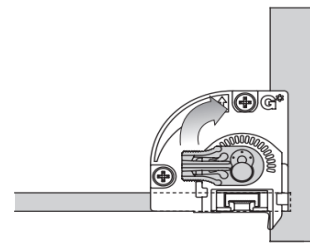
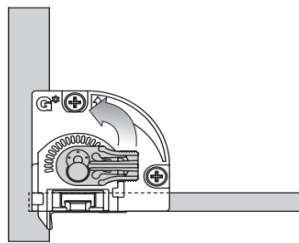
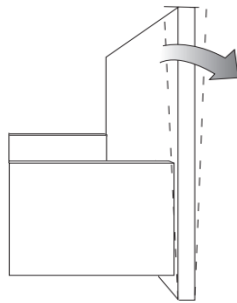
**Dynapro 2D**

Max. + 3.5 mm



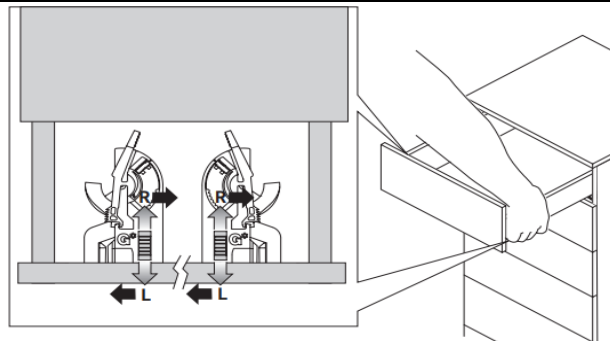
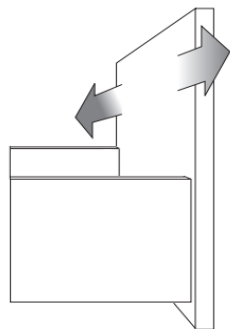
**Dynapro 3D/4D**

Max. + 4.0 mm



**Dynapro 2D/3D/4D**

Max.  $\pm$  1.5 mm



**Dynapro 4D**

Max. + 3.5 mm

